

Craftmark Catalogue 09-10



craftmark
Hand made in india

Handcrafted Lifestyle Products
& Accessories from India

Product Information Format:

Name / Product Type

Product Code

Product Description

Available Sizes

Available Colours

For orders & inquiries:

Specify product code, product name, sizes, preferred color options & order quantity.

For Example:

Safari pillow / DR-27 / Block print on cotton / 12 x 6 / Indigo Blue

All product sizes are in Inches.

Length x breadth x height

Unless stated otherwise

For Orders Contact:

For Indian & Other International Inquiries:

Sharmila Wood

Manager- Market Access Initiatives

K-17 AB, 1st Floor, Kalkaji

New Delhi 110019

T 911-11-26416492

F 911-11-26416491

s.wood@aiacaonline.org

North American Inquiries:

Katherine Allen

US Representative

Craftmark

PO Box 1

Collinsville, CT 06022

T 860-693-1123

k.allen@aiacaonline.org

We welcome inquiries on customised products and color options.



Contents



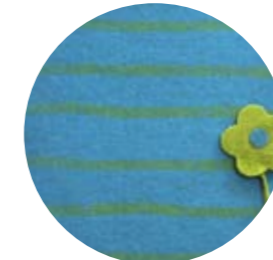
2 For Your Home



20 Accessories



38 Toys



40 Stationery

50 Craft Processes

56 Craft Partners

60 AIACA & Craftmark





For Your Home

- Baskets
- Cushion Covers
- Wooden Boxes
- Tableware

Decorations & Copper Bells

Left Page
Starfish Festive Garland
SJ - 03
 Sequins, Bead and Thread Work
 65 long
 Orange and Pink

1
Copper Bell
KH - 10 a
 Copper & Leather
 9 long

2
Copper Bell
KH - 10c
 Copper & Leather
 10.75 long

3
Copper Bell
KH - 10d
 Copper & Leather
 13.75 long

Baskets

Arambha Baskets - Golden Grass Weaving

- 1
Round Jewelry Box
AR - 05
Golden Grass
2 x 5.5 dia
Pink
- 2
Multipurpose Rectangle Box
AR - 06
Golden Grass
5 x 5.5 x 2.5
Pink
- 3
Step Round Tassel Box
AR - 12b
Golden Grass
5 x 5.5 dia
Orange and Pink
- 4
Step Round Tassel Box
AR - 12a
Golden Grass
6 x 6 dia
Orange and Pink
- 5
Flat Oval Box
AR - 11
Golden Grass
11 x 8.5 x 3
Green with Blue border
- 6
Step Round Box
AR - 12b
Golden Grass
5 x 5.5 dia
Green and Blue



- 7
Step Square Tassel Box
AR - 04b
Golden Grass
6.5 x 6; 1 tassel
Orange & Pink
- 8
Step Square Tassel Box
AR - 04a
Golden Grass
5.5 x 5; 1 tassel
Orange & Pink
- 9
Round Trivet
AR - 01
Golden Grass
16 dia
Red
- 10
Pen Holder
AR - 14
Golden Grass
3 dia x 5.5
Pink
- 11
Bowl
AR - 08
Golden Grass
10 dia
Multicolored
- 12
Multipurpose platter
AR - 09
Golden Grass
7.5 dia
Multicolored
- 13
Multipurpose Tray
AR - 03
Golden Grass
16 x 12 x 4
Orange and Pink



Kottans Baskets - Palm Leaf Weaving



1
Basket with Velvet Lining
KO-12a
Palm Leaf
12 x 6 x 5
Maroon & Pink

2
Basket with Velvet Lining
KO-12b
Palm Leaf
10 x 5.5 x 4.5
Orange & Pink

3
Basket with Velvet Lining
KO-12c
Palm Leaf
8 x 5 x 4
Brown & Pink

4
Basket with Velvet Lining
KO - 12d
Palm Leaf
6 x 4.5 x 3.5
Orange & Pink



5
Pen Holder
KO - 10a
Palm Leaf
5 x 2.5 x 2.5
Multicolor

6
Multipurpose Basket
KO - 10b
Palm Leaf
7 x 4.5 x 4.5
Multicolor

7
Multipurpose Basket
KO - 10c
Palm Leaf
4.5 x 9 x 9
Multicolor

8
Flat Basket
KO - 13 a
Palm Leaf
14 x 10.5 x 1.5
Orange and Red



9
Multipurpose Box
KO - 02
Palm Leaf
5 x 5 dia
Multicolour

10
Multipurpose Box
KO - 03
Palm Leaf
7 x 3.5
Orange and Red

11
Rectangular Box
KO - 01
Palm Leaf
4 x 8 x 5.5
Orange and Purple



13
Storage Box
KO - 05c
Palm Leaf
6 x 4 x 3.5
Blue & Orange

14
Storage Box
KO - 05b
Palm Leaf
7.5 x 6.5 x 6
Green & Maroon

15
Storage Box
KO - 05a
Palm Leaf
6.5 x 5 x 4.5
Blue & Green

16
Flat Basket
KO - 13b
Palm Leaf
12.5 x 8.5 x 1.75
Blue, Red & Green



17
Storage Box With Lid
KO - 11a
Palm Leaf
5 x 5.5 x 4
Multicolour

18
Storage Box with Lid
KO - 09
Palm Leaf
5.5 x 2 x 2.5
Multicolor

19
Storage Box with Lid
KO - 11b
Palm Leaf
4 x 4 x 6
Multicolor



The Kishkinda Trust - Banana Fibre Baskets



1
Woven Basket
TK-02a
Banana Fibre
10 x 11 x 11
Natural

2
Woven Basket
TK-02b
Banana Fibre
14 x 16 x 16
Natural

3
Woven Basket
TK-02c
Banana Fibre
18 x 22 x 22
Natural



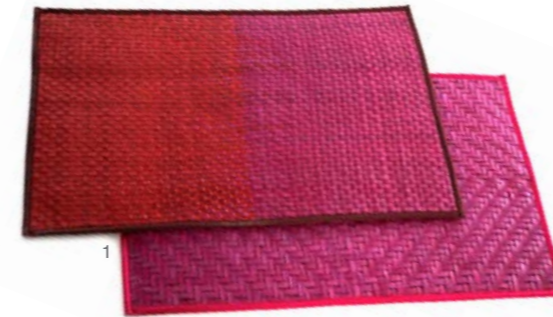
2



3

Tableware

Table Mats - Palm Leaf Weaving



1
Table Mats
KO - 04a & KO - 04b
Palm Leaf
17 x 11
Multicolor

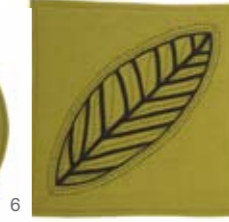
Handblock Printing



2
Safari Decoration
DR - 07b
Block print on Cotton
9 long
Indigo Blue



3
Safari Decoration
DR - 07a
Block print on Cotton
24 long
Indigo Blue



4
Leaf Round Coaster
DR - 23a
Block print on Cotton
8.5 dia
Green



5
Leaf Round Coaster
DR - 23b
Block print on Cotton
8.5 dia
Green

7
Tiger Rectangle Trivet
DR - 08d
Block print on Cotton
9 x 8
Burnt Orange

8
Safari Trivet
DR - 08a
Block print on Cotton
8 x 8
Indigo Blue

9
Tiger Rectangle Trivet
DR - 08c
Block print on Cotton
8 x 8
Burnt Orange

6
Leaf Square Trivet
DR - 08b
Block print on Cotton
10 x 10
Green

Wood & Lac Turnery

a
Wooden Ladle a
KH - 03a
Wood
12

b
Wooden Ladle b
KH - 03b
Wood
14

c
Wooden Ladle c
KH - 03c
Wood
14



Lambani Embroidery



10
Table Runner
SKK - 10a
Block print & embroidery on cotton
60 x 14
Red and Blue

11
Table Runner
SKK - 10b
Block print & embroidery on cotton
46 x 12
Navy Blue & Purple



Cushion Covers

Norbulingka - Applique

1
Poinsetta
NB - 01
 Dupion Silk
 20 x 20
 Gold with Applique

2
Peacock
NB - 02
 Dupion Silk
 20 x 20
 Gold with Applique

3
Camellia
NB-03
 Dupion Silk
 20 x 20
 Gold with Applique

4
Classic
NB - 04
 Dupion Silk
 20 x 20
 Black with applique

5
Peonies
NB - 05
 Dupion Silk
 20 x 20
 Black with applique



Dastkar Ranthanbore - Handblock Printing

- 1
Safari Long Pillow
DR - 29
Block print on Cotton
21 x 12
Indigo Blue
- 2
Crocodile Pillow
DR-01a
Block print on Cotton
12 x 6
Green
- 3
Animal Pillow
DR-01b
Block print on Cotton
12 x 6
Orange
- 4
Safari Square Pillow
DR-06 b
Block print on Cotton
10 x 10
Indigo Blue

- 5
Safari Pillow
DR-27
Block print on Cotton
12 x 6
Indigo Blue
- 6
Safari Patchwork Pillow
DR-06 a
Block print on Cotton
12 x 12
Indigo Blue



Khamir - Mashru Weaving

- 7
Striped Cushion
KH - 02b
Mashru
12 x 20
Black & White
- 8
Striped Cushion
KH - 02a
Mashru
12 x 20
Red & White
- 9
Square Striped Cushion
KH - 01c
Mashru
12 x 12
Black and White
- 10
Square Striped Cushion
KH - 01b
Mashru
12 x 12
Black, Orange & Red
- 11
Square Patterned Cushion
KH - 01a
Mashru
12 x 12
Multicolor



Dwaraka - Kalamkari

- 1
Floral Vine
DW - 08a
Kalamkari on Cotton
18 x 18
Natural
- 2
Flower
DW - 08b
Kalamkari on Cotton
6 x 6
Natural
- 3
Marigold
DW - 08c
Kalamkari on Cotton
12 x 12
Natural
- 4
Peacock
DW - 07a
Kalamkari on Cotton
24 x 24
Natural
- 5
Peacock
DW - 07b
Kalamkari on Cotton
18 x 18
Natural
- 6
Peacock
DW-07c
Kalamkari on Cotton
12 x 12
Natural



Sandur Cushion Covers - Lambani embroidery

- 1
Bolster Cover
SKK - 12a
Cotton
36 x 10 dia
Red
- 2
Cushion Cover
SKK - 13a
Cotton
16 x 16
Multicolor
- 3
Green & Blue Cushion Cover
SKK - 13c
Cotton
16 x 16
Navy Blue & Dark Green
- 4
Mirrored Cushion Cover
SKK - 13d
Cotton
12 x 12
Navy Blue
- 5
Cushion Cover
SKK - 13b
Cotton
16 x 16
Navy Blue & Red
- 7
Bolster Cover
SKK - 12b
Cotton
37 x 10 dia
Cream



The Kishkinda Trust - Banana Fibre Floor Cushions



- 8
Floor Cushion I
TK - 01c
Banana Fibre
24 x 24
Natural
- 9
Floor Cushion II
TK - 01b
Banana Fibre
24 x 24
Natural
- 10
Floor Cushion III
TK - 01a
Banana Fibre
24 x 24
Natural



- 6
Starry Sky Cushion Cover
SKK - 13e
Cotton
16 x 16
Olive Green & Orange

Sandur Wall Hanging - Lambani Embroidery



Wall Hanging
SKK - 18
Lambani embroidery on cotton
38 x 46
Patchwork

Norbulingka - Relief Carved Wooden Boxes

- 1
Essential Gem box
NB - 06a
Wood
6 x 6 x 4
Multicolor
- 2
Brocade Mini Dresser
NB - 06b
Wood
9 x 6 x 6
Multicolor
- 3
Phoenix Mini Dresser
NB - 06c
Wood
12 x 9 x 9
Multicolor



- 4
Pencil Box
NB - 07
Wood
10 x 3 x 2
Multicolor
- 5
Flower Tsampa Box
NB - 08a
Wood
9 x 6 x 6
Multicolour
- 6
Flower Tsampa Box
NB - 08b
Wood
12 x 8 x 8
Multicolour





Evening Bag
SKK - 09
Silk
9.5 x 8.5 x 3.5 handle length
Cream



Accessories

- Bags
- Bangles
- Scarves, Stoles, Sashes

Sandur Bags – Lambani Embroidery



1 Glasses case
SKK - 06
Cotton
7 x 3.25
Red

2 Coin Pouch
SKK - 19
Cotton
4 x 3.5
Green

3 Pouch
SKK - 05 a
Cotton
4.75 x 5.5
Red

4 Coin Purse
SKK - 05b
Cotton
4 x 5
Red

5 Utility Bag
SKK - 04 a
Cotton
8 x 10
Red

6 Multipurpose bag
SKK - 04b
Cotton
4.5 x 10
Red

7 Sling Bag
SKK - 07
Cotton
8.5 x 6.5
Red



1 Bohemian Patchwork Bag
SKK - 11
Silk
11 x 10 x 20 handle length
Multicoloured

2 Shoulder Bag
SKK - 15
Cotton
13.5 x 10.5 x 20 handle length
Red

3 Lambani Embroidery

8 Shoulder Sling Bag
SKK - 02
Block print & Embroidery on Cotton
8 x 7 dia
Olive Green

9 Here There Everywhere Back Pack
SKK - 03
Cotton
20 x 9 dia
Red

10 Drawstring Bag with Mirrors
SKK - 01
Cotton
11 x 7.5
Red



4 Hand Bag
SKK - 14
Cotton
10 x 8.75 x 8 handle length
Red & Navy Blue

5 V-shape bag
SKK - 17
Cotton
17 x 14
Blue

6 Shoulder Bag
SKK-16
Cotton
15 x 14 x 12 handle length
Red & Navy Blue



Dastkar Ranthabore Bags – Hand block printing

- 1 Safari Drawstring Bag
DR - 26
Block print on Cotton
4 x 4
Indigo Blue
- 2 Safari Utility Pouch
DR - 15a
Block print on Cotton
8 x 6
Indigo Blue
- 3 Safari Coin Pouch
DR - 11
Block print on Cotton
4.5 x 4.5
Indigo Blue
- 4 Safari Utility Bag
DR - 04
Block print on Cotton
12 x 6 x 6
Indigo Blue
- 5 Safari Mulitpurpose Bag
DR - 28
Block print on Cotton
12 x 10
Indigo Blue



- 6 Safari Glasses Pouch
DR - 05
Block print on Cotton
3.75 x 6.5
Indigo Blue
- 7 Safari Shoulder Bag
DR - 02
Block print on Cotton
12 x 15 x 13 handle length
Indigo Blue
- 8 Safari Large Tote Bag
DR - 03
Block print on Cotton
16 x 14 x 15 handle length
Indigo Blue
- 9 Safari Patchwork Tote Bag
DR - 14
Block print on Cotton
16 x 14 x 10 handle length
Indigo Blue



- 1 Peacock Bag
With Bamboo Handles
DR - 17
Block print on Cotton
16.5 x 15.5
Black & Cream



- 2 Animal Print Bag
DR - 16b
Block print on Cotton
16 x 18 x 9 handle length
Black & Cream



- 3 Leaf Multipurpose bag
DR - 20
Block print on Cotton
12 x 6 x 6 width
Black, white & Green



- 4 Tiger Coin pouch
DR - 15b
Block print on Cotton
8 x 6
Green



- 5 Tiger Coin pouch
DR - 19
Block print on Cotton
5 x 6.5
Black & Cream
- 6 Leaf Coin Pouch
DR-21
Block print on Cotton
4.5 x 4.5
Black, white & Green

- 7 Leaf Shoulder bag
DR - 18
Block print on Cotton
16 x 18 x 9 handle length
Black, white & Green



- 8 Leaf Shoulder Bag
DR - 22
Block print on Cotton
16 x 14 x 15 handle length
Black, white & Green



- 9 Patchwork Bag
DR - 25a
Recycled Cotton fabric
18 x 16
Green



- 10 Patchwork Utility Bag
DR - 25b
Recycled Cotton fabric
12 x 15
Green



- 11 Patchwork Wallet
DR - 25c
Recycled Cotton fabric
7.5 x 4
Green



Recycling involves converting used materials into new products. This practice prevents wasteful disposal. By recycling we can reduce our consumption of resources. To protect the environment:

Reduce, Reuse, Recycle.

Kottans Bags - Palm Leaf Weaving



1
Handbag
KO - 06
Palm Leaf
8 x 10.5 x 4.5 handle length
Purple and Red



2
Shoulder Bag
KO - 07
Palm Leaf
8.5 x 11 x 19 handle length
Orange



3
Shoulder Bag
KO - 08
Palm Leaf
8.5 x 11 x 18 handle length
Maroon

Norbulingka Bags - Applique

4
Evening Bag
NB - 09a
Cotton & Silk with Applique
11.5 x 12
Black & Rust



5
Square Bag
NB - 09b
Cotton & Silk with Applique
11.5 x 12
Black & Rust



6
Jewellery Roll
NB - 10
Silk with Applique
8.5 x 4
Grey with applique



NS Toys - Turned Wood Lacquer

1
Striped Flat Bangle
NS - 02a
Turned Wood Lacquer
2.75 Dia x 1.5 width
Red, Orange & Yellow



2
Striped Flat Bangle
NS - 02c
Turned Wood Lacquer
2.75 dia x 1.5 width
Yellow, Forest Green & Lime Green

4
Striped Flat Bangle
NS - 02d
Turned Wood Lacquer
2.75 dia x 1.5 width
Forest Green & Lime Green



3
Striped Flat Bangle
NS - 02b
Turned Wood Lacquer
2.75 dia x 1.5 width
Orange and Yellow

5
Rounded Bangle
NS - 01a
Turned Wood Lacquer
2.5 dia x 1.75 width
Red & Yellow



Sahaj Bangles - Thread work

6
Silk Thread Bangle
SJ - 01a
Thread Work
2.5 dia x 1.75 width
Purple, Magenta & Gold

9
Silk Thread Bangle
SJ - 01d
Thread Work
2.5 dia x 1.75 width
Lilac, Magenta & Gold



7
Silk Thread Bangle
SJ - 01b
Thread Work
2.5 dia x 1 width
Magenta & Gold

10
Silk Thread Bangle
SJ - 01e
Thread Work
2.5 dia x 1.75 width
Magenta, Gold & Pink

8
Silk Thread Bangle
SJ - 01c
Thread Work
2.5 dia x 1 width
Gold & Magenta





Scarves, Stoles, Sashes

Handwoven Stoles

	<p>1 Green Striped Stole KU - 11 Wool & Silk 80 x 24</p> <p>2 Skyblue Stole AT - 03 Ahimsa Silk & Wool 70 x 26</p> <p>3 Blue Twill Stole AT - 05 Ahimsa Silk & Wool 70 x 26</p> <p>4 Ocean Blue Stole AT - 04 Ahimsa Silk & Wool 70 x 26</p>			
			<p>5 Green & Yellow Diamond Stole AT - 02 Ahimsa Silk & Wool 70 x 26</p> <p>6 Peacock Blue Stripes Stole KU - 14 Wool 80 x 24</p> <p>7 Blue Striped Stole KU - 09 Wool & Silk 80 x 24</p> <p>8 Ivory Striped Stole KU - 21 Wool & Silk 80 x 24</p>	<p>9 Yellow, Blue & Green Tassled Stole KH - 11 Wool 70 x 22</p> <p>10 Dark Green Tie & Dye Shawl KH - 09a Wool 75 x 44</p> <p>11 Light & Dark Green Tie & Dye Shawl KH - 09b Wool 75 x 44</p>



Ahimsa silk

Appropriate Technology India often uses Ahimsa, also known as Peace or Non Violent Silk, which has evolved to stop the most common method of producing silk, in which thousands of silk worms are violently killed at ten days old. Ahimsa silk is extracted after the silkworm has completed metamorphosis & emerged from the cocoon. This process is performed on cocoons without killing the pupae inside, thus letting the worm live its full life cycle.

Kilmora shawls / For more information contact Craftmark



1
Magenta & Orange Stole
KU - 22
Wool
80 x 24

2
Pink & Grey Stole
AT - 09
Ahimsa Silk & Wool
70 x 26

3
Magenta Twill Stole
AT - 08
Ahimsa Silk & Wool
70 x 26

4
Maroon Block Scarf
KU - 23
Silk & Wool
52 x 12



5
Golden Yellow Stole
AT - 01
Ahimsa Silk & Wool
70 x 26

6
Yellow & Orange Striped Stole
KU - 16
Wool & Linen
80 X 24

7
Twill Green & Red Muffler
KU - 20
Wool
70 x 12



8
Lilac & Purple Striped Stole
KU - 19
Wool & Silk
80 X 24

9
Purple Shot Stole
KU - 18
Wool
80 X 24

10
Herringbone Red stole
AT - 07
Wool
70 x 26



11
Grey Stole With Red Border
KU - 10
Wool & Silk
80 x 24

12
Ivory Stole
KU - 12
Wool & Silk
80 x 24

13
Violet Check Scarf
KU - 17
Wool & Silk
72 x 12



14
Black & Ivory Stole
AT - 06
Ahimsa Silk & Wool
70 x 26

DWARAKA Silk Scarves - Kalamkari



1
Srikalahasti Scarf
DW - 10
Kalamkari on Silk
65 x 12
Red

2
Summer Flower Scarf
DW - 02
Kalamkari on Silk
65 x 12
Sunset Orange & Red

5
Vine & Bloom Scarf
DW - 03
Kalamkari on Silk
65 x 12
Blue & Mustard



5

6
Doves Scarf
DW - 04
Kalamkari on Silk
65 x 12
Natural

7
Paisely Scarf
DW - 06
Kalamkari on Silk
65 x 12
Blue



1



2



3

3
Temple Design Scarf
DW - 05
Kalamkari on Silk
76 x 7
Natural

4
Peepal Tree Scarf
DW - 01
Kalamkari on Silk
78 x 7
Maroon Red



4



6



7

SASHA Reversible Silk Stoles - Kantha

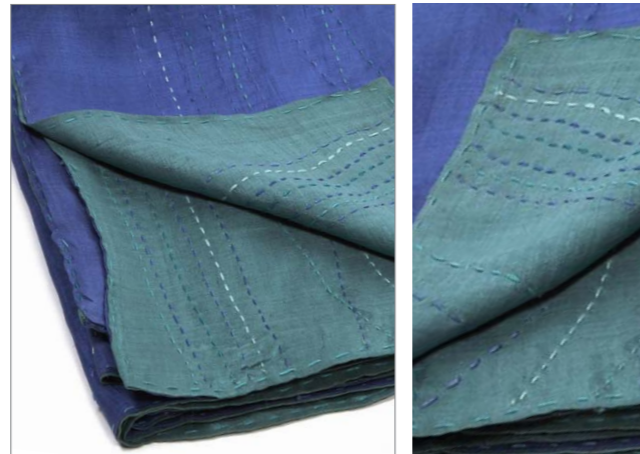
Reversible Stole
SH - 03d
Silk
75 x 21
Pink & Peach



Reversible Stole
SH - 03b
Silk
75 x 21
Blue and Magenta



Reversible Stole
SH - 03c
Silk
75 x 21
Red & Orange



Reversible Stole
SH - 03a
Silk
75 x 21
Blue & Green

Kilmora Scarves - Handwoven



1
Grey
KU - 01
Wool & Silk
70 x 12

2
Maroon Brown
KU - 02
Wool & Silk
70 x 12

3
Silver
KU - 03
Wool & Silk
70 x 12

4
Cream
KU - 04
Wool & Silk
70 x 12

5
Brown
KU - 05
Wool & Silk
70 x 12

6
Aubergine
KU - 06
Wool
70 x 12

7
Mustard & Blue
KU - 07
Wool
70 x 12

8
Bodleian Brown
KU - 08
Wool x Silk
70 x 12

Chaubundi Stoles - Dabu Printing



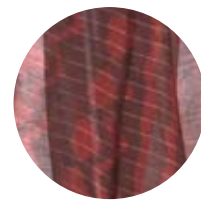
1
Dabu Print Stole
CH - 01b
Silk
92 x 36
Black & Silver



2
Dabu Print Stole
CH - 01a
Silk
98 x 44
Green & Black



3
Dabu Print on Kota Doria
CH - 01c
Cotton
100 x 45
Green & Black



4
Dabu Print Stole
CH - 02
Cotton & Zari Border
72 x 24
Strawberry Red & Purple



5
Dabu on Kota Doria
CH - 03
Cotton
100 x 42
Rose & Natural

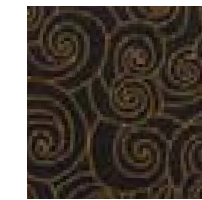
Norbulingka Sashes - Appliqué



Tassel Scarf
NB - 11a
silk
100 x 7
Rust



Tassel Scarf
NB - 11b
Silk
100 x 7
Mustard



Tassel Scarf
NB - 11c
Silk
100 x 7
Black



Women's Chuba Belt
NB - 12a
Silk
80 x 3.5
Rust



Women's Chuba Belt
NB - 12b
Silk
80 x 3.5
Mustard



Kilmora Woolen Toys - Hand knitted

1 - 5
Knitted Mouse
KU - 26
 Wool with polyfill
 5
 These are available in multiple colors.



6
Punk Doll
KU - 24
 Wool with Polyfill
 9.5 x 4.5
 Multicolored

7
Knitted Penguin
KU - 25
 Wool with polyfill
 5
 Multicolored



Vision of India Toys - Recycled Material

Decorative knick-knacks with people in traditional Indian attire.
 Size ranges from 2.5 to 4.5
 Recycled Cloth
 Can be made into hangings, pencil tops, key rings, magnets, brooches, gift cards, charms.



Sahaj - Thread & Bead Work

Lady Bug Magnets
SJ - 02
 Thread Work
 1
 Multicolor





Stationery

- Cards
- Notebooks
- Desk Accessories
- Wrapping Paper

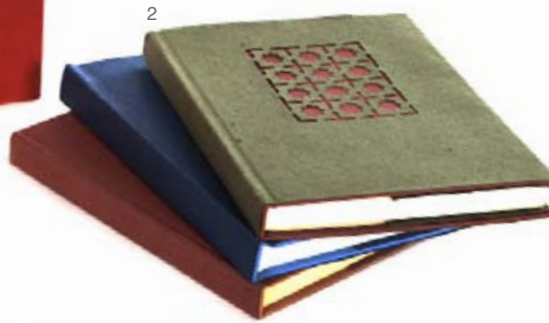
Sukriti Inprint Notebooks – Handmade, Screen printed & Recycled paper



1
Sanjhi Monkey
SI - 01c
Handmade Paper
6.5 x 5.5
Red & Orange

2
Sanjhi Jali
SI - 01b
Handmade Paper
6.5 x 5.5
Pink & Green

SI 01 Available in assorted colors & patterns.



a
Notebook
SI - 18a
Recycled Paper
6.5 x 5.5 (L)
Red



b
Notebook
SI - 18b
Handmade Paper
4.5 x 5 (S)
Red

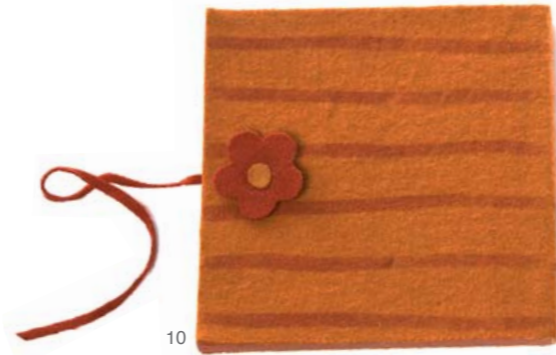
SI - 18a / SI - 18b
Available in Red & Black

3
Mauve Jaipur Flower Notebook
SI - 04a
Screen Printed Handmade Paper
8 x 6.5
White

4
Golden Sun Beam Flower Notebook
SI - 04d
Screen Printed Handmade Paper
8 x 6.5
White

5
White Sultan's Garden Flower Notebook
SI - 04b
Screen Printed Handmade Paper
8 x 6.5
Silver

6
Moon Notebook
SI - 04c
Screen Printed Handmade Paper
8 x 6.5
Yellow & Silver



10



11



9



8



12

7
Daisy Diary
SI - 03c
Felt Cover With
Handmade Paper
4 x 4
Red & Orange

8
Daisy Diary
SI - 03a
Felt Cover With
Handmade Paper
4.5 x 4.5
Orange & Red

9
Daisy Diary
SI - 03b
Felt Cover With
Handmade Paper
6 x 6
Red & Orange

10
Daisy Diary
SI - 03e
Felt Cover With
Handmade Paper
6 x 6
Orange & Red

11
Daisy Diary
SI - 03d
Felt Cover With
Handmade Paper
6 x 6
Blue & Green

12
Parrot Notebook
SI - 14
Recycled Paper
6 x 4.5
White & Orange



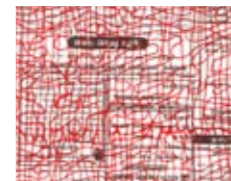
13
Printed cover Diary
SI - 07a
Handmade Paper
7 x 5.25
Red

14
Printed cover Diary
SI - 07b
Handmade Paper
7 x 5.25
Black

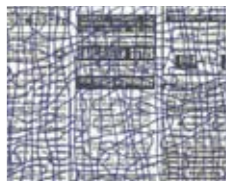


13

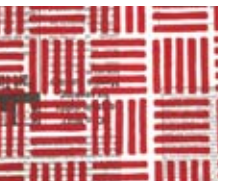
Squiggly design
SI - 09b
Red



Squiggly design
SI - 09c
Blue

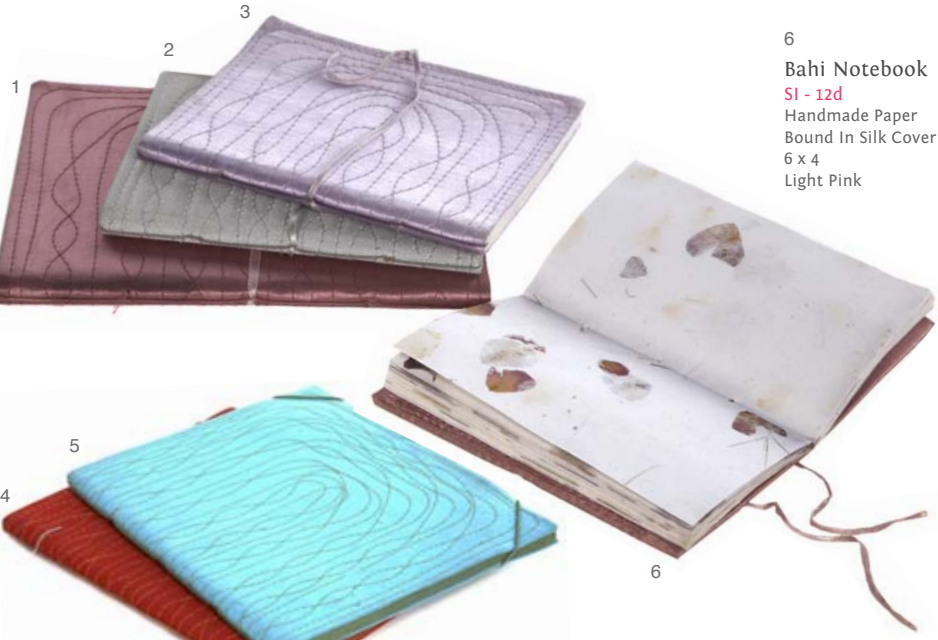


Blocks design
SI - 09d
Red



Newspaper Notebooks come with Handmade paper & Screen Printed Newspaper Cover. Available in these colours.

- 1 **Bahi Notebook**
SI - 12a
Handmade Paper
Bound In Silk Cover
8.25 x 7
Purple
- 2 **Bahi Notebook**
SI - 12b
Handmade Paper
Bound In Silk Cover
6.5 x 5.5
Silver
- 3 **Bahi Notebook**
SI - 12c
Handmade Paper
Bound In Silk Cover
6.5 x 5.5
Lilac
- 4 **Bahi Notebook**
SI - 11a
Handmade Paper
Bound In Cloth Cover
10.75 x 9
Red
- 5 **Bahi Notebook**
SI - 11b
Handmade Paper
Bound In Cloth Cover
10.75 x 9
Sea Blue



- 6 **Bahi Notebook**
SI - 12d
Handmade Paper
Bound In Silk Cover
6 x 4
Light Pink

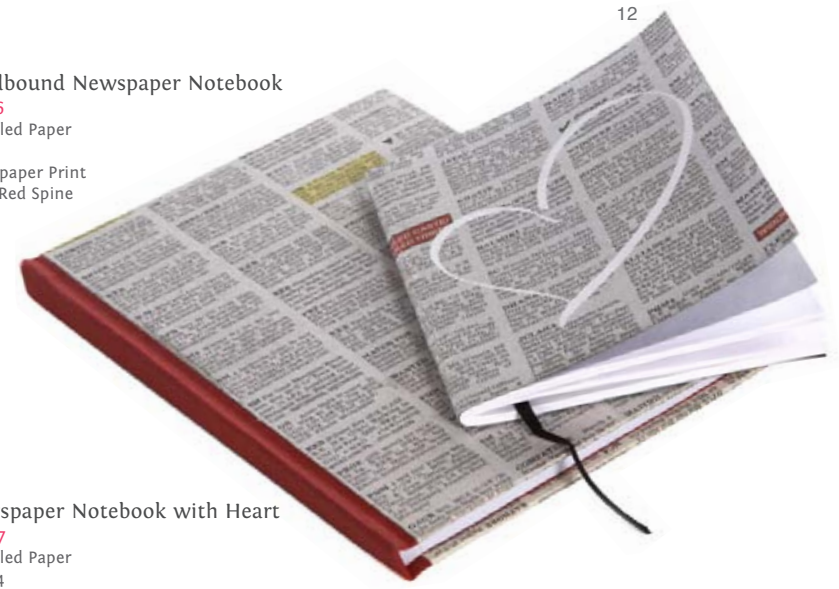


- 7 **Bahi Notebook**
SI - 02
Set of Three Diaries with Indian Matrimonial Advertisement Covers in a Heart Shaped Box
Recycled Paper
5 x 3.5
Red & Newspaper print

- 8 **Set of 2 Notebooks in a Newspaper bag**
SI - 26
Recycled Paper
5.5 x 4
Screen Printed Newspaper



- 11 **Hardbound Newspaper Notebook**
SI - 16
Recycled Paper
7 x 5
Newspaper Print
With Red Spine



- 12 **Newspaper Notebook with Heart**
SI - 27
Recycled Paper
5.5 x 4
Newspaper Print

- 1 **Day Dreaming Notebook**
SI - 24a
Handmade Paper
6 x 4
Green, pastel green & Purple
- 2 **Day Dreaming Notebook**
SI - 24b
Handmade Paper
6 x 4
Green, pastel green & yellow



- 3 **Secret Garden Notebook**
SI - 24c
Handmade Paper
6 x 4
Pastel Pink & white
- 4 **Secret Garden Notebook**
SI - 25d
Handmade Paper
6 x 4
Pastel Pink & white



- 5 **Flower & Vines**
SI - 17a
Recycled Paper
7.5 x 6.5 (L)
White & Teal

- 6 **Flower & Vines**
SI - 17a
Recycled Paper
5.5 x 4 (s)
White & Teal

- 7 **Screen Print Vines Cover**
SI - 10
Handmade Paper
Bound In Screen Print Cloth Cover
5.5 x 3.75
White & Teal



SASHA - Patua Painting



- 8 **Hand Painted Cloth Diary**
SH - 01
Cotton Cloth Binding & Paper
10.25 x 7.5
Red



- 9 **Hand Painted Cloth Diary**
SH - 02
Cotton Cloth Binding & Paper
3.75 x 5.25
Red

Cards & Photo Albums

1
Spring Garden Cards -
Set Of Three Cards With Envelopes In A Folder
SI - 05a
Screen Printed on Handmade Paper
6.5 x 4.5
Available In Assorted Colors



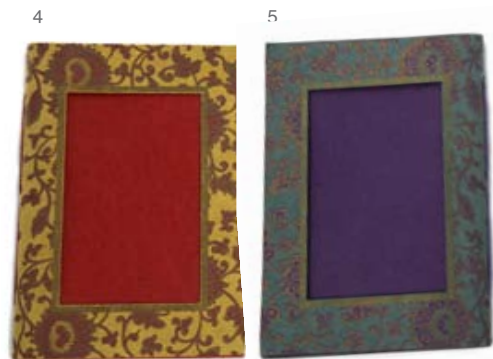
2
Spring Garden
(Set of Three)
SI - 05b
Screen Printed
Handmade Paper
6.5 x 4.5
Black and Golden envelopes
& cards with Pink holder

3
Spring Garden
(Set of Three)
SI - 05c
Screen Printed
Handmade Paper
6.5 x 4.5
Mauve and Silver envelopes
& cards with Blue holder

6
Set of 6 different cards
SI - 15
Screen Printed Handmade Paper
6.25 x 4.75 x 1
Various

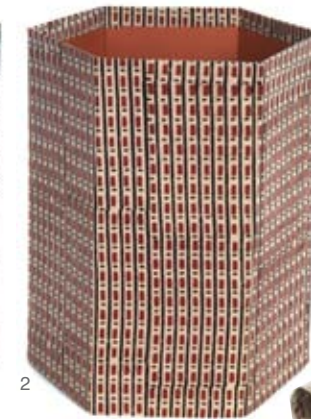


4
Indian Summer Photo Album
SI - 06a
Screen Printed Handmade Paper
7 x 4.7
Red with Mustard Border



5
Indian Summer Photo Album
SI - 06b
Screen Printed Handmade Paper
7 x 4.7
Purple with Teal Border

Multipurpose Baskets



1
Multipurpose Basket
SI - 19a
Screen Printed Cloth
11.75 x 8.25
Green

2
Multipurpose Basket
SI - 19b
Screen Printed Cloth
11.75 x 8.25
Black & Red Print

3
Multipurpose Basket
SI - 19c
Screen Printed Cloth
11.75 x 8.25
Yellow & Orange

4
Multipurpose Basket
SI - 19d
Screen Printed Cloth
11.75 x 8.25
White & Orange

5
Multipurpose Basket
SI - 19e
Screen Printed Cloth
11.75 x 8.25
Green & Blue

6
Multipurpose Basket
SI - 19f
Screen Printed Cloth
11.75 x 8.25
Dark Green



7
Pen Stand
SI - 08a
Screen Printed Cloth
4 X 3 Dia
Green

8
Pen Stand
SI - 08b
Screen Printed Cloth
4 X 3 Dia
Yellow

9
Pen Stand
SI - 08c
Screen Printed Cloth
4 X 3 Dia
Green

Norbulingka Notebooks



Blue Book Cover with Notebook
NB - 13
 Cotton Cover, Handmade Paper Notebook
 9 x 6
 Blue



Teak Notebook
NB - 15
 Wood
 9 x 6 x 1
 Natural Wood Color

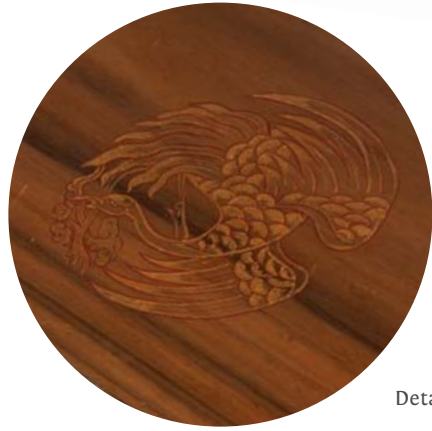


Teak Notebook
NB - 16
 Wood
 7 x 4.5 x 1
 Natural Wood Color

Idea Book / Set of Three
NB - 14
 Silk Cover, Handmade Paper Notebook
 10 x 4.5
 Red, Yellow, Blue



Leather Bound Diary
NB - 17
 Leather
 6 x 4.5
 Brown



Detail of the teak notebook cover.

Wrapping Paper

All sheets are printed on 50 GSM Rice Paper.



- 1 Sultan Flower
SI - 23
White
- 2 Sultan Flower
SI - 23
Royal Blue
- 3 Sultan Flower
SI - 23
Red
- 4 Sultan Flower
SI - 23
Gold
- 5 Jaipur Flower
SI - 22
Gold
- 6 Jaipur Flower
SI - 22
Maroon
- 7 Jaipur Flower
SI - 22
Royal Blue
- 8 Jaipur Flower
SI - 22
Green
- 9 Blooming Flowers
SI - 24
Gold



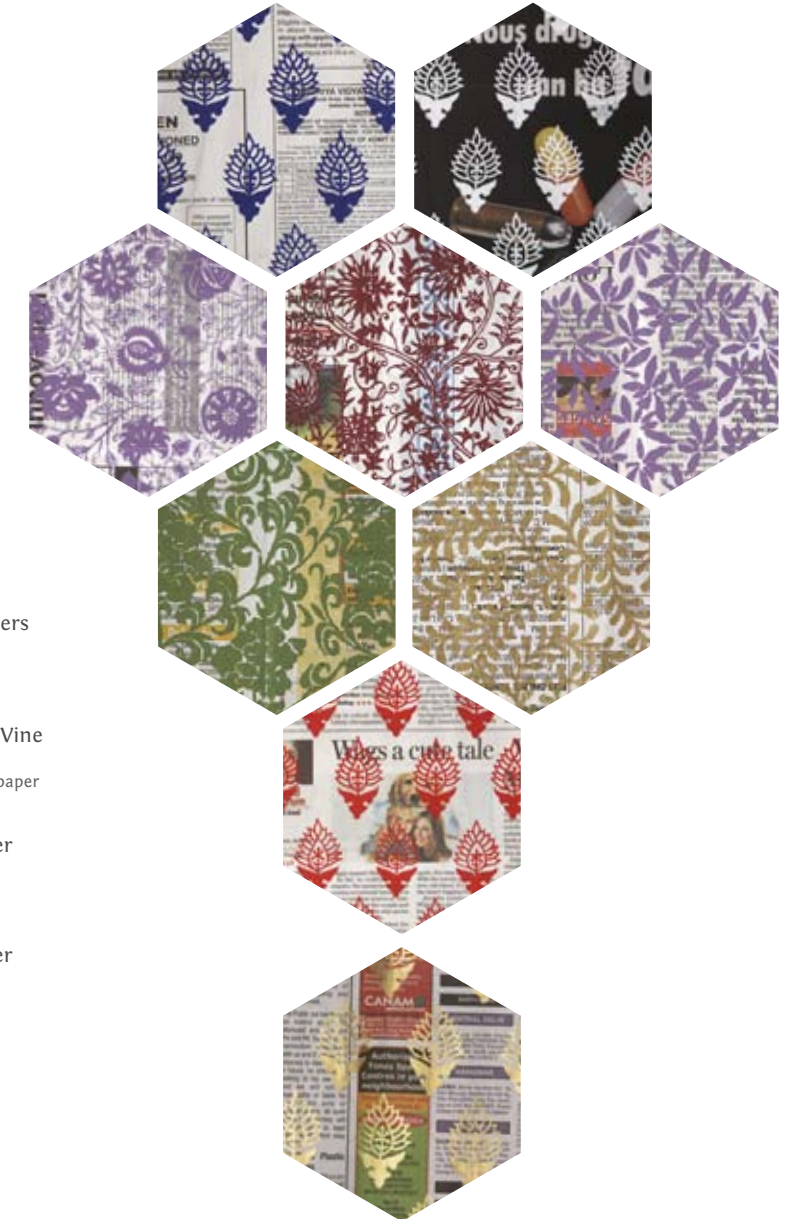
- 10 Jardin Flower
SI - 21
Gold
- 11 Bamboo
SI - 20
Gold
- 12 Bamboo
SI - 20
Green
- 13 Lotus
SI - 19
White
- 14 Lotus
SI - 19
Royal Blue
- 15 Peacock Feather
SI - 24
Pink
- 16 Blooming Garden
SI - 25
Pink



- 1 Blooming Garden
SI - 25
Gold
- 2 Blooming Garden
SI - 25
Royal Blue
- 3 Blooming Garden
SI - 25
Silver
- 4 Flower Power
SI - 28
Silver
- 5 Blooming Flowers
SI - 24a
Gold
- 6 Mughal Garden
SI - 29
Royal Blue
- 7 Twisting Fern
SI - 30
Gold



- 8 Floral Vine
SI - 31a
Maroon
- 9 Sultan Flower
SI - 23a
Royal Blue
- 10 Sultan Flower
SI - 23a
White
- 11 Flower Power
SI - 28a
Silver
- 12 Twisting Fern
SI - 30a
Gold
- 13 Curved Flowers
SI - 32a
Olive Green
- 14 Passionfruit Vine
SI - 22k
Purple & Newspaper
- 15 Sultan Flower
SI - 23a
Red
- 16 Sultan Flower
SI - 23a
Gold



5 & 9 -16 All sheets are printed on Newsprint.



Craft Processes



Copper Bells

The Muslim Lohar community brought the tradition of crafting metal bells to the Kutch area from Sindh, Pakistan. Today, the bells are handcrafted by artisan clusters around the regions of Nirona, Bhuj, Nakhatrana, Zura and Ratadia in Gujarat. Made from copper & brass, the bells once adorned the necks of livestock, now they are also finely embellished & used for decoration in homes, gardens & during festive occasions. The gong fitted in the centre of the bell produces a musical sound and artisans vary the shape & curvature of the bells to create different pitches.



Dabu Printing

The tradition of Dabu printing is practised by the Rajasthani Chippa community. In Dabu, wood blocks are used to apply the resist usually a paste of naturally pounded wheat chaff, mud, gum & sawdust, which is freshly prepared before each printing. To quickly dry the paste, saw dust is applied over the mud resist, this acts as a binder & prevents colour bleeding during the dyeing process. The application of the resist is followed by dipping the fabric in a cauldron of dye. This process can be repeated to create multiple levels of dabu patterns.

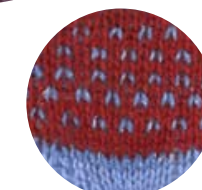
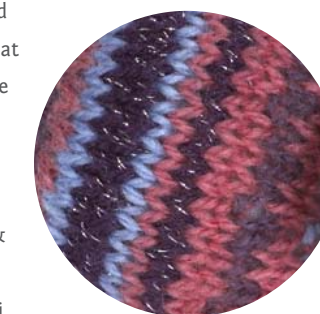


Mashru Weaving

Mashru is distinct from other fabrics because it has two faces, cotton on the reverse side of the fabric, and silk on the outer. The fabric was developed because of religious laws pertaining to shar'ia Muslim men, who were not allowed to have pure silk touch their body. Mashru is an Arabic word meaning 'permitted' and may have been brought to India from the Middle East. The double sided fabric enabled men to wear clothing that had on the exterior the rich, decorative qualities of woven silk whilst heeding religious laws. Mashru weaving is characterized by its bold colourful patterns & stripes of various colours & sizes. There are many types of Mashru including sangi, galta, gulbadan & susi, the differences are based on pattern, colour, weave & location of production. Whilst once widespread, the production of Mashru is now limited to Patan, Mandvi, & Surat in Gujarat.

Hand knitting

Hand knitting is mainly practiced in the hilly states of North India: Jammu & Kashmir, Himachal Pradesh & Uttarakhand. Both men & women have traditionally been engaged in spinning, weaving, crochet & knitting of wool. While spinning & weaving are generally practiced by particular communities, knitting & crochet are not restricted to members of any particular community. Designs range from plain knits to a variety of cable designs, raised patterns & their combinations. Various colored yarns are also used. Knitting is done in close knits as well as loose knits.





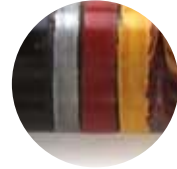
Hand block printing

Hand block printing is practiced in over 20 regions in India, making it one of the country's popular crafts. Each region has its own distinct traditions influenced by local culture. The process involves great creativity & skill. The first stage involves a block maker who carves intricate designs by hand onto teakwood. An appointed master craftsman dips the block into a tray containing vegetable or chemical dyes, which is then applied with skilled precision onto stretched fabric.



Handmade paper

Handmade paper can be made with a variety of materials, from tropical crop residual fibre, such as banana leaf and sugar cane to cotton t-shirt cuttings. Handmade paper is made sheet by sheet; there are many types of regionalized paper production. Whilst varied, in general, the process involves pulping the raw material, this is then poured onto a paper mould, a wooden frame with a woven wire mesh cover, which has a second frame, on top. The sheet is formed on the mould in a vat. Depending on the desired weight of the paper, more pulp can be added to create thickness. The paper is then dried. Small scale papermaking continues to be an important source of income in India.



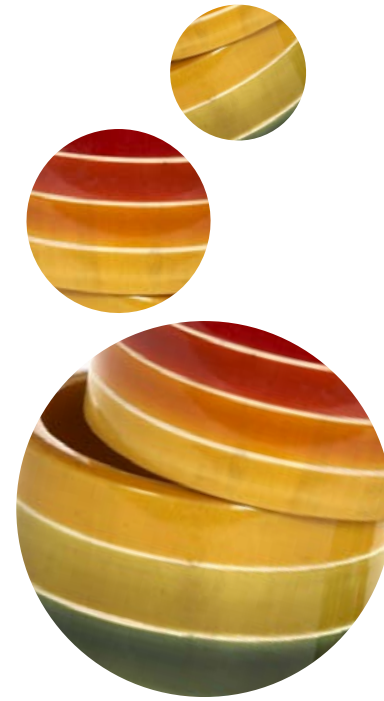
Wood & lac Turnery

The Wadha Kohlis, a nomadic group from the Nirona region of Kutch are famous for their turned wood lacquer products made from teak or hard mango wood. The wood is turned and shaped on an indigenous lathe made of two iron rods. Coarse cloth dipped in oil is used to smooth the surface of the wood. Artisans use a mixture of vegetable-derived dyes and lac to give the lacquer ware its colour, and sometimes graphics are etched into the lac with a chisel during the lacquering process.



Golden Grass

Golden grass or sikki is found growing in the wet & marshy areas of India. The sikki, has a natural golden hue, but can also be boiled in dyes to create a wider range of colours. Sikki grass products are mainly made by the women of the household, particularly brides-to-be to include in their dowry. The entire process of picking, drying, slicing & shaving the grass is completed by the artisans. A coiling method using a six inch long needle-shaped iron object with a rounded head made of lac, called a takua, aids the process.

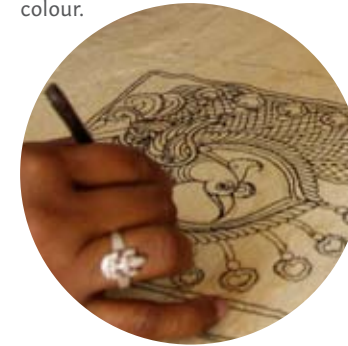


Turned Wood Lacquer

Originally, the turned wood lacquer tradition was based around the production of toys, a practice that can be traced to the reign of Tipu Sultan who invited artisans from Persia to train the local crafts people. Craftspeople, called chitragars use duhi or milk wood to fashion the products as the light colour of the wood & softness make it ideal for turning & lacquering. The artisan shapes & designs the object using a lathe & dry lac sticks are pressed onto the wood whilst it is turned. The heat generated by the friction of the revolving wood melts the lac onto the wood.

Kalamkari

Kalamkari translates as hand-painting on fabric & was originally developed to embellish temple cloth & hangings with figurative and narrative motifs. Kalamkari craft is thought to have been produced in India since the middle ages originating from the wealthy Golconda sultanate of Hyderabad. The intricate, complex hand crafted process consists of almost eighteen stages. The entire pattern is created using a kalam or pen made from wood and fibre. The fibre holds the ink & releases it when the artisan applies pressure & the lines of the design are drawn with a mixture of iron-filings & molasses. Vegetable dyes are used to give the fabric its rich colour.



Lambani Embroidery

Lambanis or Banjaras are a nomadic, gypsy tribe from the states of Andhra Pradesh, Karnataka, Maharashtra & Gujrat. Lambani embroidery is a fusion of pattern darning, mirror work, cross stitch & overlaid and quilting stitches with borders of Kangura patchwork appliqué done on a base fabric. A distinctive design element is the use of local mud resist handloom fabric & mirrors, shells and white ornamental trims.

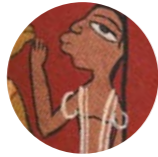


Banana Fibre

The dry bark of the banana tree is used as the raw material for banana fibre crafts & is most common in India's southern states. 'Shorba' is removed from the plant & then soaked in water to make it pliable. It is sliced into rope of varying thickness then dyed into different colours. Artisans then weave & crochet the fibre using various techniques into products. Other natural fibres like sisal, aloe, pineapple & screw pine are also incorporated into banana fibre objects.

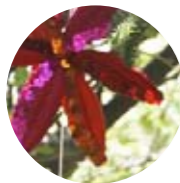
Thread and Bead Work

Gujarat is well known for the diverse array of skilled craftwork produced by its many communities. Beadwork developed in Gujarat after seed beads were imported in the late 19th century. By the beginning of the 20th century, Kathi women were producing beadwork as a home craft. The Kathi style of bead work traditionally has a white background, with beads of clear primary coloured glass in motifs of peacocks, deities, elephants and flowers. The exquisite jewellery pieces also make use of thread which is coiled around yarn to build up textures & colours.



Patua Painting

The Patuas are a creative community of scroll painters and singers residing in the Medinipur District of West Bengal. Pata is a bangla word evolved from the Sanskrit 'pata' meaning cloth. The Patuas make beautiful art work, called 'pat' art that is drawn on silk or cotton fabric. Whilst traditional motifs of religion and society are still depicted, the subject matter & themes reflect changing times with artists painting about relevant social issues, and historical events.



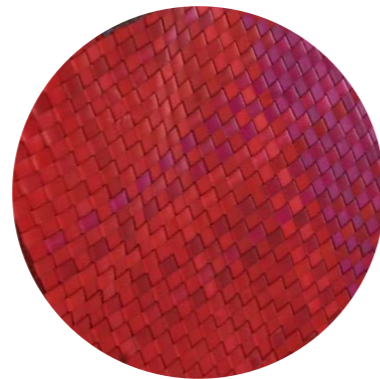
Palm Leaf Weaving

The palmyra leaf baskets of Chettinad, also known as Kottans are made by the Chettiar people of Tamil Nadu. To create these products, the palm leaf is harvested & spread out like a fan to dry for between five to six days before being spliced with a knife into thin strips. The weavers braid the dried leaves into patterns using their hands to weave and feet to grip the base of the basket. Colourful cotton cloth & beads are sometimes used to enhance the object. Kottans were originally used for packaging gifts & containers filled with offerings to give at family functions & rituals.



Kantha

Kantha is a type of embroidery popular with women in Bengal. Kantha comprises of the simplest stitch in the language of embroidery - the running stitch. It is the way in which this stitch is used, in different arrangements, that forms the complex vocabulary of kantha. This distinctive style of embroidery is used to create quilts, saris, dupatta & fabrics, where meticulous running-stitches transform the fabric into extraordinarily beautiful creations. The entire cloth is covered with running stitches & can carry beautiful decorative motifs.



Appliqué

For centuries Tibetan artisans have been creating fabric thangkas, mostly made of silk, some woven or embroidered with Buddhist imagery. The process is complex & involves first sketching a design, transferring it onto paper, then hand cutting the material. The material is hand sewn onto a background to form a picture. The fabric pieces can be placed side by side or overlapped with each other to lend a greater degree of dimension. The direction of sewing, the ply of the silk thread, the tension or lack of a stitch & the capacity of the embroidery to form patterns are all used to create visual interest & variety.



Tibetan woodcarving

The Tibetan art of woodcarving dates back to the construction of the Tsulhakhang Temple at Lhasa, Tibet in the 7th century AD. The site contained elaborately carved narrations of the story of the Bodhisattvas as well as intricately detailed wooden tea bowls, carved windows, shrines and thrones. Soft woods, including khair & chilpine are used to fashion an array of objects. Woodcarving also involves highly skilled drawing and mastery over a repertoire of images, symbols and motifs. The object is finished by painting, lacquering or varnishing.



Craft Partners



Khamir Craft

Khamir Craft Resource Centre was set up in the aftermath of the Gujarat earthquake in 2002 to promote long term sustainable economic & cultural development around Kutch in Gujarat. Khamir was initiated by the Kachchh Nav Nirman Abhiyan (KNNA) & the Nehru Foundation for Development (NFD). Khamir have been instrumental in reviving traditional Kutch crafts such as ajrakh block printing, tie dye, weaving, lacquer, bell making, as well as silver and leather work as viable sources of income for artisan communities. The Centre provides a space of artisans to develop business skills, build capacity, exchange knowledge & strengthen culture.

www.khamir.org



DWARAKA

DWARAKA or Development of Weavers and Rural Artisans in Kalamkari Art preserves and promotes the work of Kalamkari artisans based around Srikalahathi and the surrounding villages of V.M. Palli and Enguluru in Andhra Pradesh. There are now approximately 100 artisans regularly producing the complex and highly skilled paintings. The DWARAKA product range includes stoles, scarves, sarees, bags, wall panels, gift boxes, corporate gifts, and home furnishings.

www.dwarakaonline.com



NS Toys

NS Toys is located in Channapatna, South Karnataka, from humble beginnings it has grown into an organization that works with 13 Self Help women's groups & supports the livelihoods of 120 women. The vivid, bright colours of the well crafted wooden crafts are instantly recognisable, & widely sought after. Originally the group primarily made toys but have expanded their range to include attractive home & kitchen ware, as well as fashion accessories.



The Kishkinda Trust

The Kishkinda Trust (TKT) is located in Aneundi, Karnataka, & supports economic empowerment for rural artisans. TKT promotes the sustainable use of resources & aims to also preserve the natural & cultural heritage of the area. They have also supported the production of the local hand woven fabric, Ikal. In 1999 TKT initiated their natural fibre project which uses local resources such as banana fibre, & river grass to create unique hand crafted products. TKT provides regular capacity building workshops for artisans in design, skill & product development. They produce a wide selection of bags, table mats, quilts as well as stoles and scarves.

www.thekishkindatrust.org



Arambha

Arambha is located in Bhubaneswar in Orissa. They have been operating for eight years and work with over one thousand artisans, who are formed into Self Help Groups for production, and banking purposes. Arambha artisans work in a variety of materials including terracotta, bamboo, textiles, mat weaving, palm leaf, and coir. Master craftspeople provide training, and skills development. Arambha also works closely with designers & research institutes to upgrade products.



Kilmora

Kilmora is the brand name for Kumaun Grameen Udyog (KGU). KGU aims to increase livelihood opportunities for the local people living around the Nainital District of Uttarakhand. KGU was set up in 1996 by the Central Himalayan Rural Action Group (CHIRAG), a non-profit grass roots development organization that has worked extensively in the central Himalayas. KGU employs twenty weavers, sixty artisans, & supports three hundred and fifty small farmers from whom they source agricultural products. KGU also contributes to concrete & tangible community development projects. The Kilmora range includes toys, tea cossies, sweaters & jackets as well as accessories such as scarves, stoles, caps, mufflers, neck warmers, gloves & socks.

www.kilmora.in



Chaubundi

Chaubundi was founded by Raghunath Nama, to sustain and strengthen this traditional print design of the same name, originating from Rajasthan. Nama, is from a family of traditional Chippa hand block printer and continues to honor his cultural heritage, as well as breathe new life into the craft, by constantly innovating. Chaubundi continues to experiment on a range of materials from hosiery to silk, crepe, jute, cotton & tassar. Its combination of printing, Dabu (mud-resist), tie dye, lehriya, Japanese Shibori & kiryanu creates sarees, dupattas, stoles & fabrics that are unique & interesting.



Sandur

Sandur Kushala Kala Kendra (SKKK) works with Lambani artisans in the Bellary district of Karnataka. Lambanis also known as, Banjaras are a nomadic, gypsy tribe well-known for their exquisite traditional hand-embroidery using various stitches & mirror crafts. Currently, Sandur work with 300 women engaged in embroidery, khadi spinning and weaving. In addition to being paid for the production of each craft product, women artisans that work with Sandur also receives an annual bonus & other benefits such as health and life insurance. Sandur has been previously awarded the prestigious 'UNESCO Seal of Excellence for Handicrafts in South Asia'. Sandur make unique one off wall hangings, as well as a product range that includes cushions, bolsters, bags & belts.

www.kushalakalasandur.com



SASHA

Sasha (Sarba Shanti Ayog) was started in 1978, & today works with more than 150 producer groups & communities, involving 7000 artisans, most of whom are women. They are a Founding member of the Fair Trade Forum, Asia & committed member of International Federation for Alternative Trade. Their Enterprise Development Foundation aims to support business enterprises in order to eliminate conditions of poverty and unemployment. SASHA works with artisans across a diverse range of practices and skills. With a strong emphasis on design innovation that incorporates traditional skills, SASHA ensures that their products are both aesthetic and original.

www.sashaworld.com



Vision of India

Vision of India is a non-profit organisation committed to improving the lives of India's rural villages. They aim to provide an integrated rural development program that promotes self-sufficiency. VOI has been connected with projects in Rajasthan, Maharashtra, Haryana & several other parts of India. VOI have been working with women to organize self help groups that provide supplementary income to women engaged in weaving, tailoring, doll-making and other craft activities.

www.visionofindia.org



Sahaj

Sahaj is an initiative of the N.M. Sadguru Water and Development Foundation based in Eastern Gujarat. They were set up to counter the poverty & the exploitation faced by marginalized peoples living in this area. The crafts produced by Sahaj artisans include beaded jewellery, bamboo artefacts, quilts & fashion accessories. Sahaj works with 170 groups & over 2500 artisans, mainly tribal people living in remote villages. Through skills training & marketing activities Sahaj has made a real difference to the lives of its artisans who have also gained social status through economic empowerment.

www.sahajindia.org



Sukriti Inprint

Since 1979, Sukriti Inprint has crafted the highest quality hand-made paper products. Based in New Delhi & drawing on the city's rich artistic & literary tradition, they have designed paper products including letters & envelopes, gift paper, diaries & folios. Throughout their 30 year history Sukriti have ensured their entire process from cutting to printing to binding has remained in house & on site. Each of their master crafts people maintain careful personal attention to detail.

www.sukritiinprint.com



Appropriate Technology India (ATI)

Appropriate Technology India is an NGO working with communities in the Western Himalaya; their mandate is to conserve natural resources while utilizing non timber forest products. ATI helps rural villagers to balance the economic activity with the need for ecological sustainability. ATI's livelihood activities provide income to counter the hardship faced by villages in the region. As part of their work, ATI helps rural villagers to produce tasar silk, and create hand woven products such as stoles, and scarves.

www.atindia.org



Dastkar Ranthambore

Dastkar Ranthambore works with women artisans in the villages around Ranthambore Tiger Reserve in the Sawai Madhopur district of Rajasthan. Dastkar's distinctive Tiger motif & use of trees, birds & animal imagery demonstrates the communities concern for the natural environment & in particular, the endangered Tiger species found in the area. Dastkar has been working in the region since 1980, supporting women in their production of patch work, & embroidered products that includes fashion accessories such as bags, & home furnishings including cushion covers and bedspreads.

www.dastkar.org



Norbulingka

Norbulingka Institute located in the Kangra district of Dharamshala is dedicated to keeping Tibetan culture alive. Norbulingka is actively contributing to the task of preserving Tibetan culture through providing training, education & employment for Tibetans living in India. It supports an environment in which Tibetan community & family values can flourish. It reconciles the traditional creatively & respectfully with the modern & seeks to create an international awareness of Tibetan values & their expression in art & literature. Norbulingka artisans create exquisite, high quality products using traditional Tibetan techniques of appliqué, woodworking, sculpture & thangka painting.

www.norbulingka.org



M.Rm.Rm Cultural Foundation

M.Rm.Rm Cultural Foundation was established by Mrs. Visalakshi Ramaswamy to support research & the revival of crafts, textiles and architecture in the Chettinad region of Tamil Nadu. The production of Kottans, the Chettinad palm leaf basket began as an income generation & cultural preservation initiative in the year 2000. The Foundation supports building new markets for Kottans through interventions that assist craftspeople to adapt their traditional weaving styles whilst incorporating contemporary color and design.



All India Artisans and Craftworkers Welfare Association

AIACA is a not for profit membership-based apex body for the handloom & handicraft sector in India. In addition to policy research and advocacy, AIACA runs a range of programs that work to promote new models of income generation in order to enhance the long term viability of the Indian handicraft sector. AIACA assists artisan groups by running capacity building & organizational development programs. Our Enterprise Support Program (ESP) partners with producers to expand and professionalize their operations, assisting them to become more sustainable.

www.aiacaonline.org



Craftmark

The Craftmark is an initiative of AIACA . The Craftmark denotes genuine handmade Indian products. It is a seal of authenticity, and a reassurance of quality & integrity. AIACA licenses the Craftmark seal for use by Craft-based businesses, cooperatives & NGOs for use on product tickets & labels. An organization has to meet vigorous certification standards to be granted the seal. The Craftmark is a Certification Trademark under registration by the Trademarks Authority.

www.craftmark.org

The 2009 - 2010 Craftmark catalogue demonstrates the creativity & skill of Indian craft producers, in a range of processes, media & materials. In a world swamped with mass produced & factory made products, the artisans in this catalogue have demonstrated their dedication to the art of the handmade, producing unique products of the highest quality. When you purchase a Craftmark product you are also supporting employment & income generation that helps to improve the lives of Indian artisans.

By Purchasing a Craftmark certified product, you are ensured of a high quality handmade product that provides employment to craftspeople in India.



